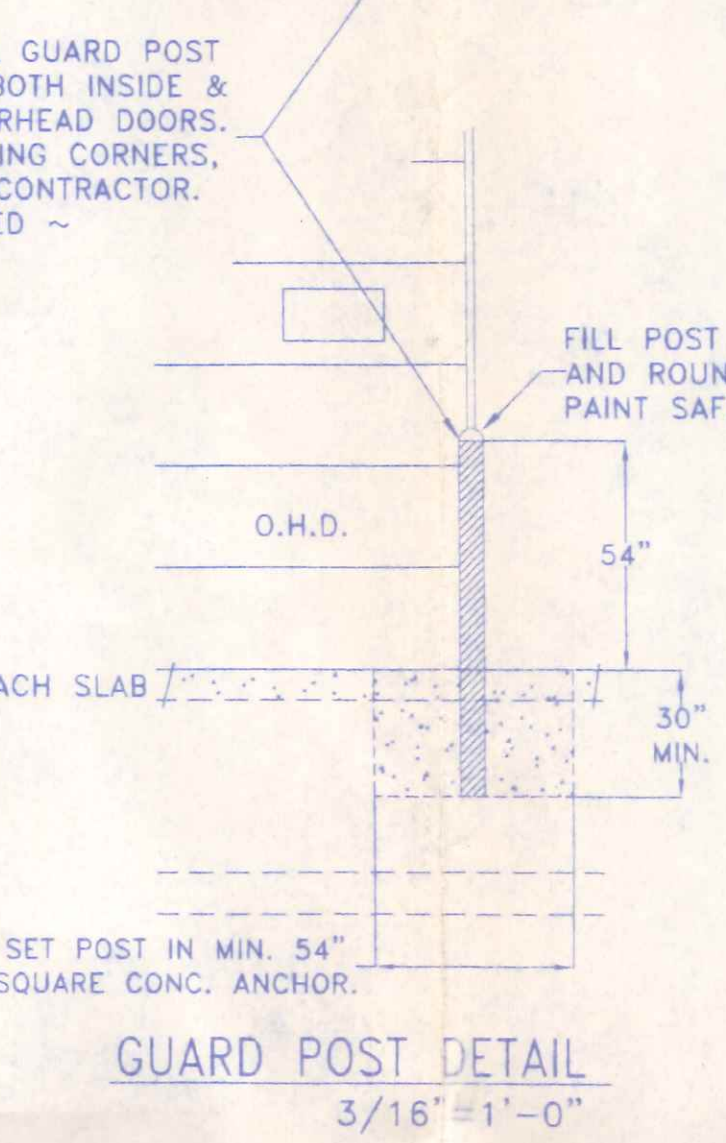
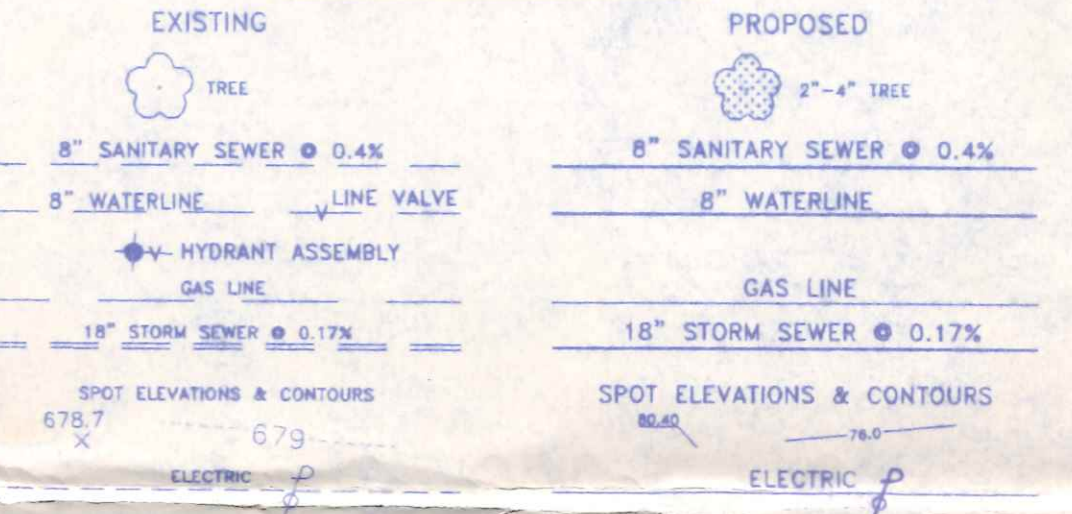


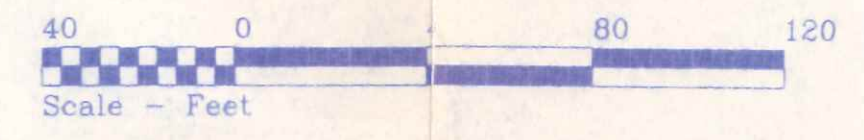
LOCATION MAP

PART OF THE SOUTHEAST QUARTER 1/4, SECTION 6, T-5-N, R-7-E, LIBERTY TOWNSHIP, HENRY COUNTY, OHIO ALSO KNOWN AS LOT #2 OF NORTH POINTE - PLAT NO. 3 A SUBDIVISION IN THE CITY OF NAPOLEON, HENRY CO., OHIO. CONTAINING 3.630 ACRES. ZONING = C-5, HIGHWAY COMMERCIAL

LEGEND OF UTILITIES



**BUILDING DATA:**  
USE GROUP: MIXED USE "S-1" MODERATE HAZARD STORAGE & INCIDENTAL USE "B" SALES & BUSINESS OFFICE.  
CONSTRUCTION TYPE: 2-B  
AREA: ALLOWABLE: 17,500 SQ. FT. (Table 503 2-B Const.)  
12,000 SQ. FT. w/o FIRE SUPPRESSION  
PROPOSED: 12,000 SQ. FT.  
HEIGHT: ALLOWABLE: 55' - 3 STORY  
PROPOSED: 22' - 1 STORY  
MAXIMUM OCCUPANCY LOAD: 12 PERSONS (Estimated Actual)  
MAXIMUM EXIT ACCESS TRAVEL DISTANCE: 200' ALLOWABLE  
170' ± PROPOSED  
DESIGN LOADS: FLOOR; MIN. 250 psf. LIVE plus DEAD LOAD  
ROOF: 20 psf. Min., LIVE LOAD plus DEAD LOAD  
20 psf. GROUND SNOW LOAD  
SNOW EXPOSURE FACTOR, Ce = 1.0  
SNOW LOAD IMPORTANCE FACTOR, Is = 1.0  
THERMAL FACTOR, Ct = 1.1  
WIND: EXPOSURE "C", 75 mph basic wind speed,  
90 mph 3 second gust wind velocity.  
WIND IMPORTANCE FACTOR, Iw = 1.00  
BUILDING CATEGORY = I  
SOIL BEARING CAPACITY: 2,000 p.s.f. (Class 4 Soils)  
SEISMIC DATA: SITE CLASS = D  
USE GROUP = I  
SPECTRAL RESPONSE COEFFICIENTS, SDS = 0.280  
SM1 = 0.144  
OCCUPANCY IMPORTANCE FACTOR = 1.00  
SEISMIC DESIGN CATEGORY:  
SHORT PERIOD = B  
1 SECOND PERIOD = B  
ANALYSIS PROCEDURE: SAP (1617.5)  
BASIC STRUCTURAL SYSTEM: 3 MRFS  
RESPONSE MODIFICATION COEFFICIENT: R = 4.0  
DEFLECTION APPLICATION FACTOR: Cd = 3.5  
FOR ADDITIONAL SEISMIC DATA  
~ SEE MANUFACTURER'S ATTACHMENT ~  
GENERAL NOTES:  
1) ALL WORK AND MATERIAL SHALL BE IN ACCORDANCE WITH THE REQUIREMENTS OF THE CITY OF NAPOLEON.  
2) PROPERTY LINE INFORMATION SHOWN HEREON IS FROM A SURVEY BY PAUL J. WESTHOVEN, P.S. #5602



2 WORKING DAYS  
BEFORE YOU DIG

CALL TOLL FREE 80-362-2764  
OHIO UTILITIES PROTECTION SERVICE

| WARDS TRUCK SERVICE                     |                                | AMERICAN ROAD NAPOLEON, OHIO |                 |
|---|--------------------------------|------------------------------|-----------------|
| DIRECTORY: C:\ND\CUSTOM                 | FILE NAME: \WARDTRUCK\SITEPLAN | REVISED:                     |                 |
| DRAWN BY: R.D.S. ~ dba: NEW DIMENSIONS  | SCALE: NOTED                   | DATE: JULY, 2006             | DRAWING NUMBER: |
| SITE PLAN, LOCATION MAP & BUILDING DATA |                                | S - 1                        |                 |